

IOTA

I1.

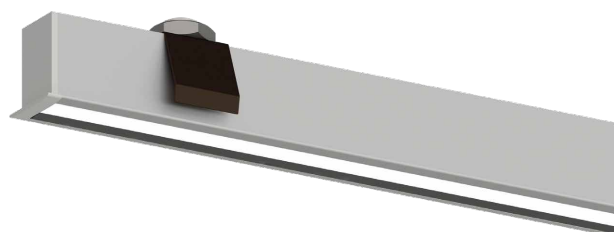


Decorated anodised aluminium lamp complete with flush-fitted brushed diffuser and high-brightness LED source with a high Lumen/Watt ratio. Suitable for accent and primary residential, retail and general lighting. Flush-mounted

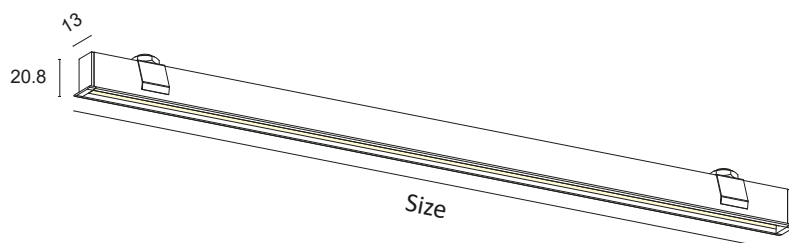
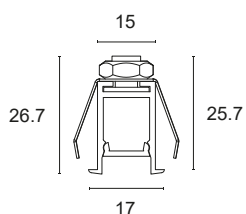
Constant 24Vdc voltage supply
Parallel connection, 50 cm cable

Constant voltage power supplies page 237
Dimming Accessories page 249

 **MADE IN ITALY**



Max. milling cut 15mm



BASIC CODES

I1.

FINISHES

- 1** White
 - 2** Matt black
 - 7** Brushed aluminium
- *Other finishes on request.

SIDE SUPPORTS

- 1** White
- 2** Matt black
- 5** Grey
- 7** Brushed aluminium

SIZE

- A** 300mm
- B** 450mm
- C** 500mm
- D** 600mm
- E** 700mm
- F** 800mm
- G** 900mm
- H** 1000mm
- I** 1200mm
- J** 1300mm
- K** 1400mm
- L** 1500mm
- M** 1800mm
- N** 2000mm
- O** 2300mm
- P** 2500mm
- Q** 2800mm
- R** 3000mm

LED COLOUR

- BN** 4000K
 - BC** 3000K
 - CC** 2700K
- *Strip also available coloured, Dynamic White, RGB.

POWER

D	10W/m	1400Lm/m	98LED/m	S2835	CRI>85	
D+	10W/m	1400Lm/m	112LED/m	S2835	CRI>90	
E	16.8W/m	2000Lm/m	140LED/m	S2835	CRI>85	
E+	16.8W/m	2000Lm/m	140LED/m	S2835	CRI>90	
F	20.2W/m	2500Lm/m	168LED/m	S2835	CRI>85	
F+	20.2W/m	2500Lm/m	168LED/m	S2835	CRI>90	
G	25W/m	3500Lm/m	160LED/m	S2835	CRI>80	
L+	28W/m	3500Lm/m	160LED/m	S2835	CRI>90	
C1+	10W/m	1050Lm/m	COB LED		CRI>90	

*Energy class referring to light source

DIFFUSER

- S** BRUSHED

Code example:

IOTA + White + Side supports white + 900mm + 3000K + 10W/m CRI>85 + Brushed diffuser = Code: I1.11GBCDS